

## DSL B-2

## Blast Resistant

### SPECIFICATIONS

---

<b>Frame</b>	14 GA. Cold-rolled steel
<b>Door</b>	14 GA. Cold-rolled steel; 1-25/32 inches thick ASTM A1008 / A1008M
<b>Blast Resistance</b>	From 2 psi and very long duration blasts, up to 4 psi with a duration of 35 milliseconds or less
<b>Paint</b>	Prime Painted
<b>Hinges</b>	(3) 5" Heavy Duty NRP Butt Hinges with SS Bearings
<b>Lock</b>	Dependent on blast requirements Single or 3-point Mortise Lock

### OPTIONS\*

---

<b>Door Types</b>	F, N, V, G and Pairs
<b>Stainless Steel</b>	Type 316L or Type 304 ASTM A240 / A240M
<b>Galvanized Steel</b>	ASTM A653 / A653M – A60
<b>Vision Panel</b>	DSM Proprietary
<b>Fire Rated</b>	Up to 3 hours for Flush Doors Up to 90 minutes with Vision Panel
<b>Ballistic Resistant**</b>	Up to Level 8
<b>Hinges</b>	Stainless Steel Continuous Pin & Barrel w/ SS Bearings
<b>Customizations</b>	Size, Hardware and Features

\* Some options are mutually exclusive

\*\* Special door construction

### INDEPENDENT VERIFICATION AND QUALIFICATION TESTING

---

Architectural Testing, Inc.

Baker Engineering and Risk Consultants, Inc.

DeanSteel Manufacturing Company  
931 S. Flores Street  
San Antonio, TX 78204

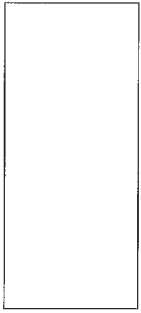
P 800.825.8271  
F 210.226.0913  
www.DeanSteel.com



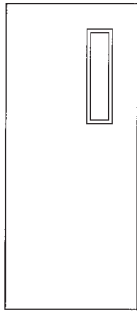
MADE IN AMERICA  
AND VETERAN OWNED



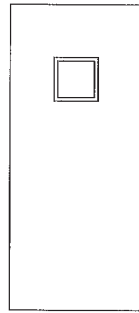
## Door Types



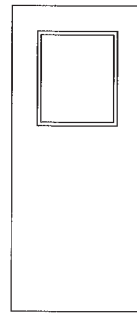
F  
FLUSH



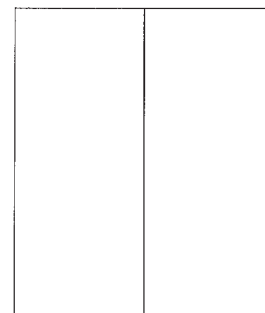
N  
NARROW VISION



V  
VISION

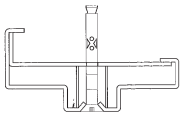


G  
HALF LITE

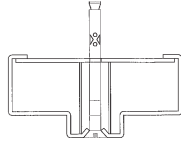


PAIR

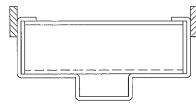
## Frame Types



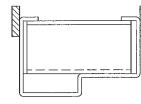
SLIP-IN



"D"



WELDED-IN  
"D"



WELDED-IN  
"F"